

Special Invitation Friday

June 1 10:00AM - 6PM

**Saturday June 2 10AM— 5PM**

**Sunday June 3 10AM— 4PM**

**Monday June 4 10AM— 4PM**

4850 35A St. SE

Calgary, AB T2B 3M8

# Eastfield

**INDUSTRIAL AREA**

## COLLECTOR'S SALE

IN A WAREHOUSE!



# Welcome

My brother and I would like to welcome you to our father's, Vic Halase, extensive collection of – well, almost anything!

Vic was born in 1929 in Drumheller, Alberta to a Hungarian coal miner and his wife. He became an entrepreneur early in life as he left school before reaching the age of 16. He did things like selling shoes, riding the “rails” and picking up truckloads of coke, by hand, to take to Calgary to sell. Being a truck driver by trade, Vic was always drawn to vehicles – both cars and trucks. He had his own trucking business and discovered an interest in restoring old, mostly antique, vehicles.

He was always collecting something that he might use on one of his 15 or more vehicles he eventually restored. Vic, and our mother Freda, were members of the Alberta Pioneer Auto Club. They enjoyed socializing and participating in many of the auto shows and tours, with Vic bringing home a number of trophies (another collection).

As Vic's eye sight deteriorated and he could no longer work on his vehicles, he began to collect model cars and trucks – then tractors, planes and trains. These collections blossomed into others and you now can all share in his love of collecting. Vic is very proud of his collection and is always happy to take anyone on a tour.

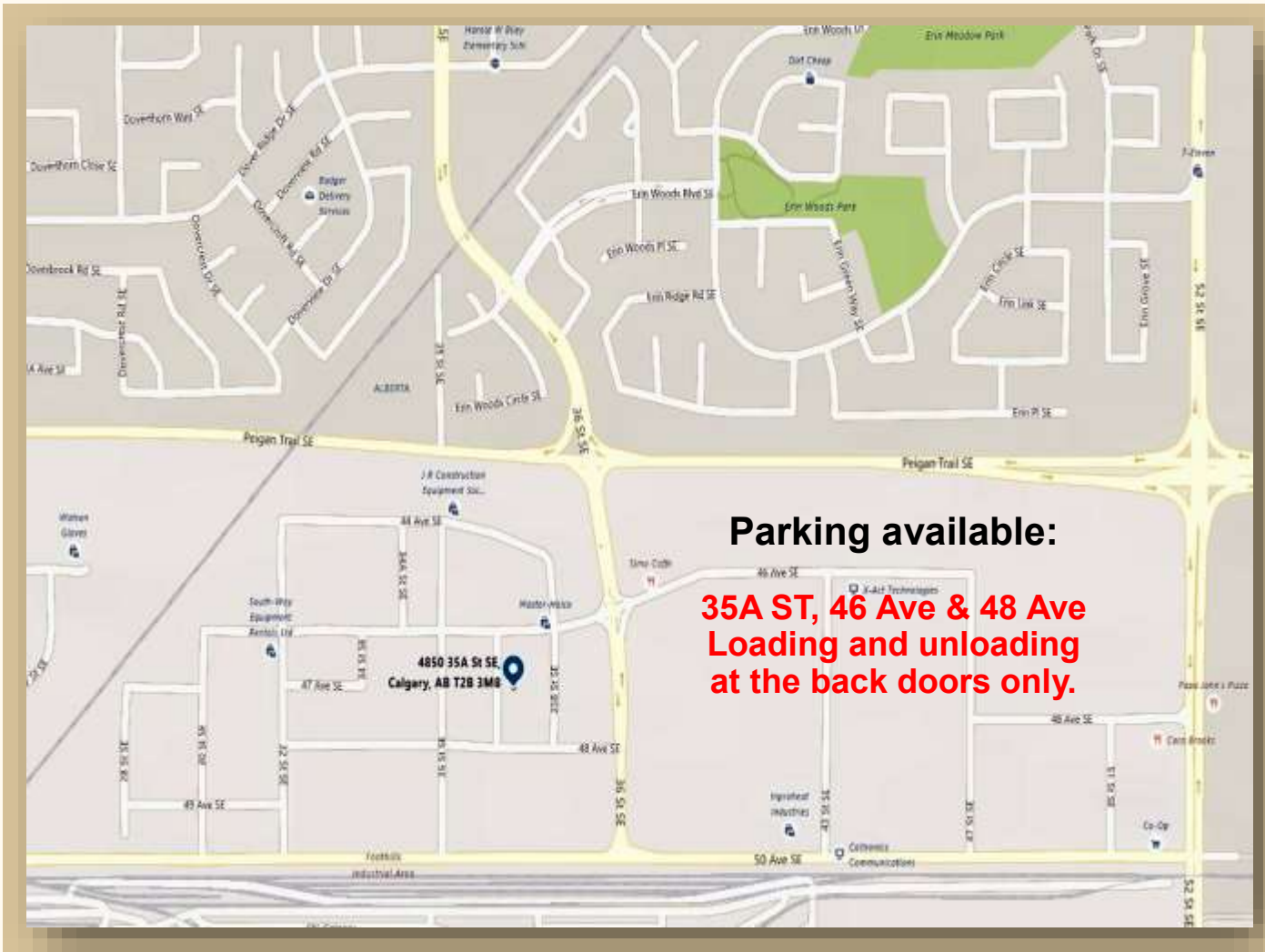
As this has become a family project, we all hope you enjoy his collection as much as he did and hope you find some favorites of your own.

***Vicki and Ken***



## Eastfield Industrial Area

This sale is being held in **Vic Halase's warehouse** of *treasures*.  
You might say his own museum!



**Everything**  
**PRICE TAGGED TO**  
**SELL**

**CASH & CARRY**

**Bring help to**  
**MOVE furniture**

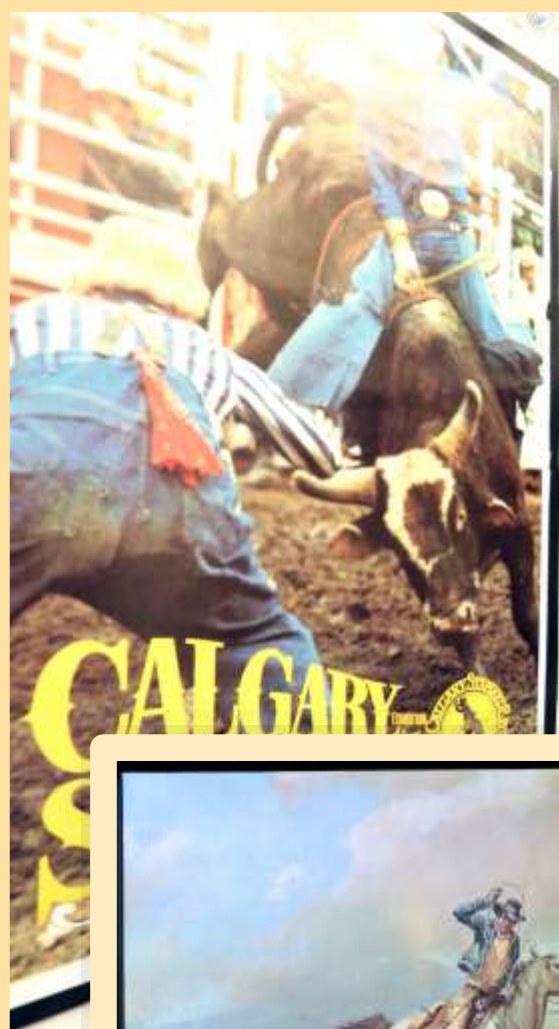
**This is *not* an**  
**Auction...every item is**  
**price tagged to sell**  
**when the doors open.**  
**Cash and Carry!**  
**Packed full!!!**

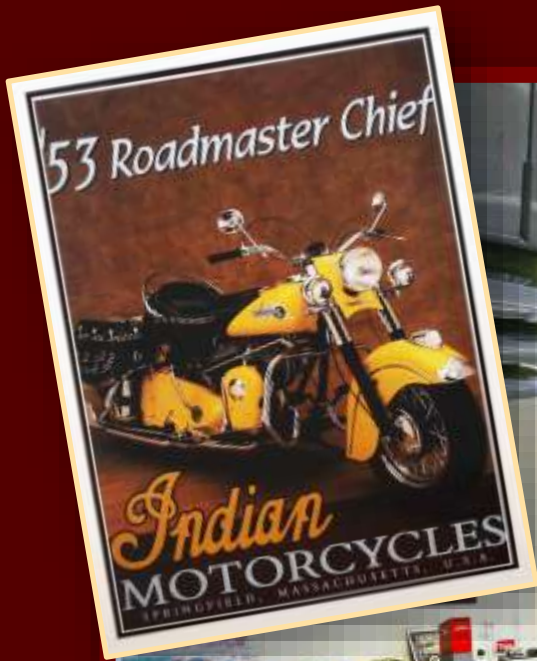
*Information herein*  
*deemed reliable but not*  
*guaranteed*

**ENJOY THE SALE!**

**4850 35A St. SE Calgary, AB T2B 3M8**







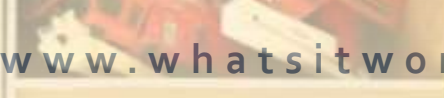
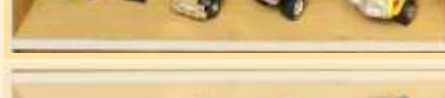




















Die-cast metal







Original 1946 Wurlitzer made in USA.  
Colored lights including bubble track lights.  
Comes with a whole lot of 78 rpm records!  
Beautifully restored.





“25 cent “ Wurlitzer  
Comes with over 250 records!  
(Holds 100 records at a time)





4 feet long!



**WARNING**  
• Adult supervision required  
• Never use this toy, stroller, stroller, or baby carriage when it is carrying just one child  
• Always use proper  
• One child only  
**RAIDER-A-PICKER**  
12 inch front wheel  
12 inch rear wheel  
12 inch front wheel  
12 inch rear wheel  
Model #8



4.5 feet long



Mini-Motors of America  
1-800-358-5987





An Antique Auto Is Like  
Another Man's Wife --  
Look And Admire, But

**DO NOT TOUCH**

Compliments of  
**CALGARY BUMPER REPAIR LTD.**  
Calgary, Alberta  
Specialists in Chrome Plating

\$1.00 ea.







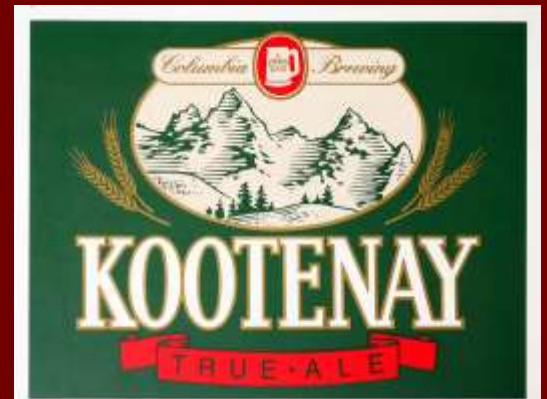




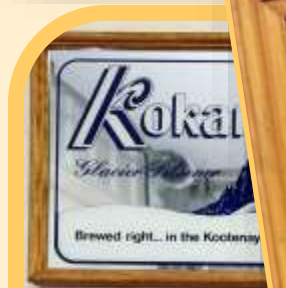




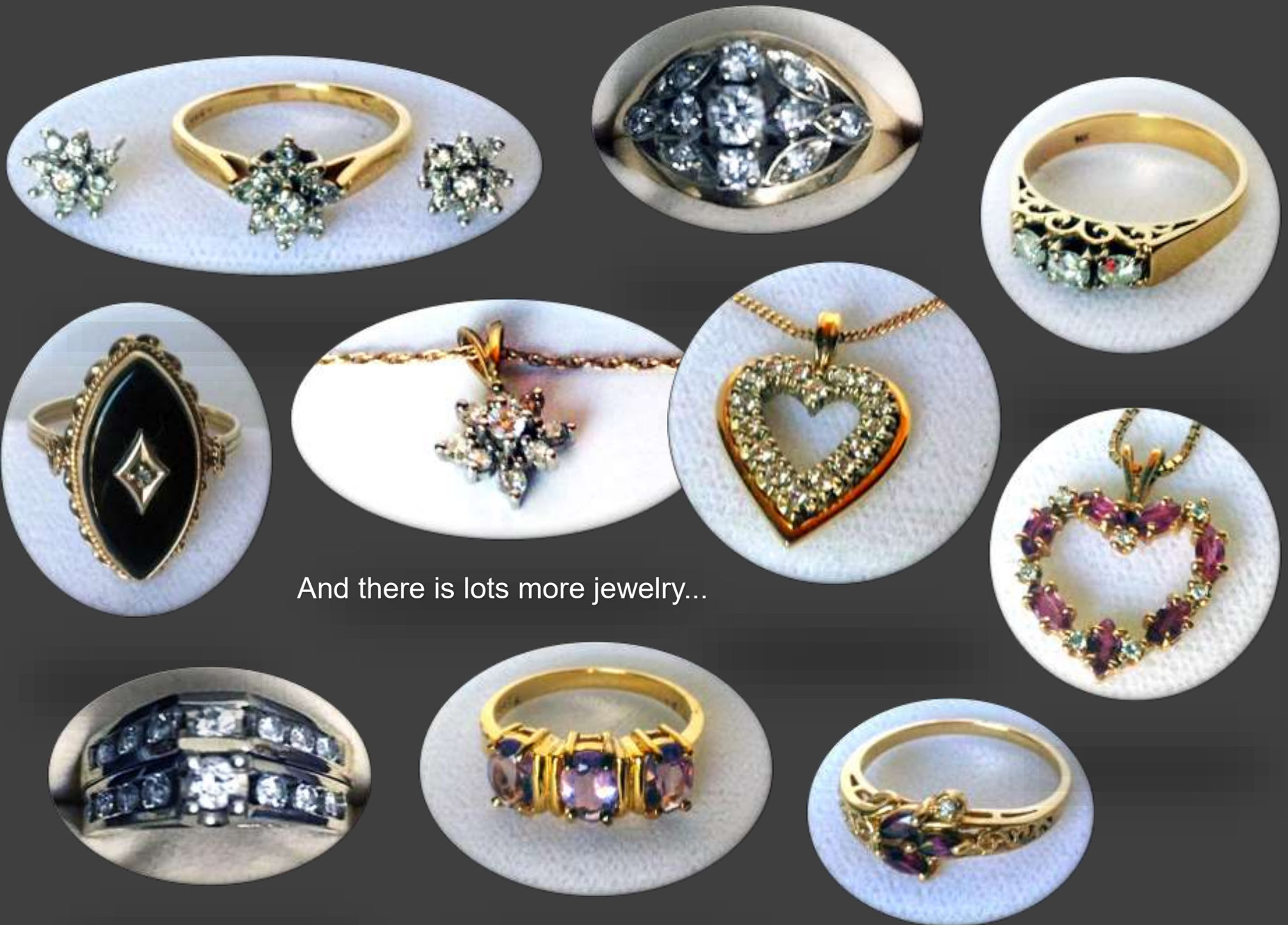




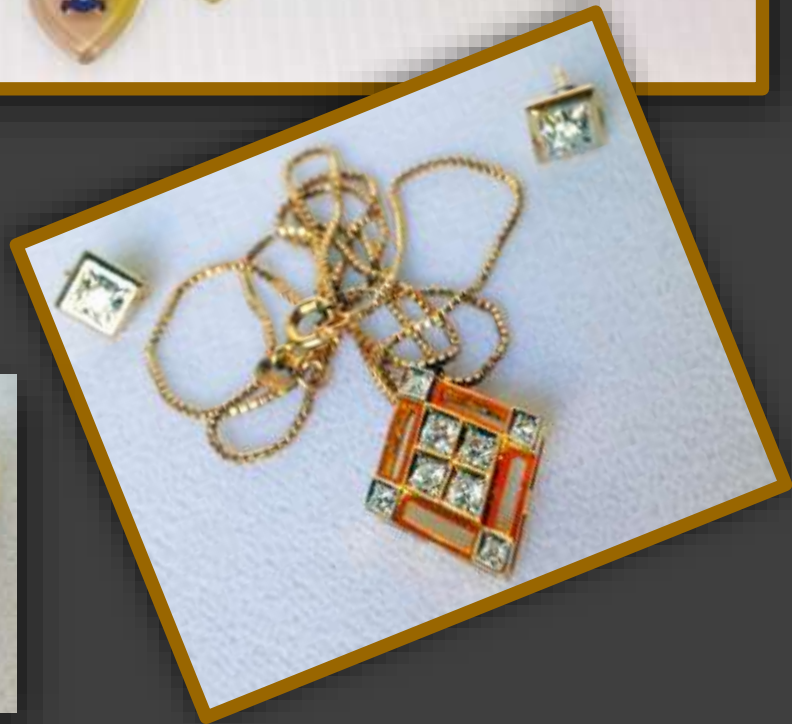








And there is lots more jewelry...

























## DETAILS

### ASSORTED GOLD JEWELRY WITH CURRENT APPRAISAL (You receive with purchase)

Bracelet – engraved, safety chain, 9K  
 Ring – two-tone, forget me not, 10K  
 Coral necklace, ring, and pair of earrings – 14K  
 Ring – 10K blue stone  
 Ring – amethyst 10K  
 Ring – tiny amethyst 10K  
 Ring – diamond x 3, 14K  
 Ring – 5 rubies and diamonds, 14K  
 Ring – 6 diamonds, tiny, 14K  
 Set – 2 earrings, bracelet, necklace twist  
 Necklace – heart shape pendant, diamonds, 17, 14K  
 Set – necklace, earrings x 2, ring (9 diamonds), 14K  
 Set – necklace, earrings x 2, ring (3 stones), bracelet  
 Necklace – amethyst with pendant  
 Amethyst, 3 stones, gold  
 Ring – 3 pearls, necklace and earrings  
 Ring - onyx, gold, 10K, earrings, necklace (necklace not gold)  
 Ring – 18K, 2 diamonds, 2 blue stones, a third blue stone is damaged  
 Chain – 23 inches  
 Necklace and earrings – 3 pearls in each  
 Necklace – single pearl  
 Necklace and earrings – amethyst  
 Necklace – small amethyst pendant  
 Necklace and earrings – pearl star shape (necklace)  
 Necklace and earrings – 3 diamonds in each  
 Earrings – 10-14K gold  
 Pendant – 10K chain  
 Pendant and earrings – love know plus diamond  
 Pendant – with pearl  
 Earrings – with rubies  
 Pendant – with chain  
 Necklace and earrings – with mini-pearl  
 Watch

Numerous earrings, rings, bracelets, pendants and necklaces. **TOO NUMEROUS TO PHOTOGRAPH.**

### **FASHION JEWELRY ... and sterling items ...**

- Small face ladies Seiko Watch with exceptional bracelet and safety chain
- 5-strand fresh water pearl necklace, 17 1/2"
- Cultured pearl necklace, 17 1/2" ... sterling clasp, safety chain plus earrings
- RCAF Heart-shaped sweetheart pin on pin back
- Lucite ladies heart-shaped pendent with RCAF badge attached to front
- HELBROS ladies manual watch with "faux diamond chips"
- Ladies 7 1/4" double link bracelet with 12 faux diamonds
- Oval sterling locket with engraved front on 18"
- Pendant with amethyst pillow-shaped stone, rhinestone border, on 17" chain
- 17 1/2" Sterling silver chain
- 10 kt ladies small box link gold chain, 18" chain
- 18" chain ... sterling pendent with tiny amethyst stone
- 17" Sterling chain with floral sterling pendent and attached fresh water pearl
- 24" fresh water pearl necklace  
925 Sterling necklace 17 1/2"

### **NOVELTY WATCHES**

Selection of Gents Watches, including **McCoy** (truck gravel boxes), **Western Star Trucks**, **Fruehauf**, **John Deere Pocket Watch ...** and boxed wrist watch **also John Deere**, plus Calvin Hill gift set (3 piece)

### **ANTIQUES & COLLECTIBLES**

- Cast iron sausage maker, made by Enterprise MFG with assorted accessories
- Maple wood "Primitive" Cabbage slicer
- Vintage Washboard
- Pioneer "Gingerbread" Style Shelf Clock. Hand-carved pediment, circa 1884 by Ingraham & Company. (Slow striker) Height 21", as is replaced front glass, may need adjustments.
- Working Barber's Chair, new leather seat, back and headrest. Cream coloured enamel and chrome overall. Manufactured by EMIL J. PAIDAR, Chicago. Includes razor strop \* swivels and tilts backwards... with adjustable height (hydraulics)
- One **Bronze face Antique Cash Register** from "National Cash Register Company Toronto". Original plaque, in working order, very or-

nate front (see photo gallery)

- **Nickel-plated Antique Cash Register**, "National Cash Register Company Toronto", marble insert with "Amount Purchased" sign on top, supported by stylized dolphins, oak wood base, very ornate front, in working order (see photo gallery)

- Brass blow torch with soldering iron (excellent condition)
  - Vintage boxed "friction" Cadillac Car
  - Brass Banff Parks Buffalo 1931
  - 1 Banff Centennial 1895-1995 Brass-like Buffalo
  - 2 Silver Banff Centennial 1895-1995 Buffalo
  - Banff National Park 1885-1995 Centennial, 2 coins - Kiwanis Dollar and Indian Days 1970. Both coins designed by Charles Beil.
  - Antique Oil Can...approx. 20" tall
  - Stainless Coffee Urn with spigot, on tray, with Cream & Sugar
  - Boxed (as new) Munsters Koach, made by American Muscle, Ertel Collectibles, 2002
  - Boxed (as new) Die-Cast Checker Taxicab, made by Sun Star, 1981, also some cabs without boxes
  - Selection of Olympic 1988 Collectors Pins, plus many others (approx. 500)
  - Collectible tin car, with tin wheels...battery operated, as is
  - Scale model beer themed SEMI's (6) (Miller, Red Dog, Moosehead, Honey Brown, Pabst, Corono) (sold as set)...approx. 6" long
  - "Hubley Toys" reproduction die-cast Model A (real rubber wheels)
  - Cadillac emblems framed (1959-2000)
- PRECIOUS MOMENTS figures...drastically reduced (by 80%) some with boxes...one set of 6...certificates...APPROXIMATELY 72 PIECES!!**

### **AVON COLLECTABLES**

Approximately 45 assorted Avon collectibles including glass card, trains, trucks, etc.etc. All priced at \$4 each

### **ASSORTED BEER STEINS**

Approx. 30 ... from a 4" tall to 20" tall - some Japanese, some German (some are German made glass drinking boots)

### **COLLECTION OF BELT BUCKLES**

- Ford MACK
- Firefighters Rodeo
- Golden Nugget
- Studebaker
- OK Corral Gunfight

- Calgary Bumper (2)
- QSA
- Portland Swap Meet (2)
- Caterpillar
- Western  
Special Buckles: Harley Davidson (gold plated), Calgary Stampede 1912-2012 (2), Calgary Stampede 2011

### **BRASS**

Approximately 40 pieces of Brass, ornamental type including candle stands, pots, pitchers, vases, birds, spittoons, and large items such as horse-drawn carts (6), standing horse, and **large eagle on perch**

### **CALGARY STAMPEDE**

- "Let er buck" resin trophy
- The Big Four tin
- Hook for keys
- Buckin' Bull plaque
- 1973 mug
- Canadian Rye Whiskey Calgary Stampede Bottle (100 years) alcohol inside bottle
- Plus another 100 years...tea inside, instead of alcohol
- Selection of Stampede Posters (rolled) (28), only \$4.00 each
- Beautifully framed, ready to hang 2013 Calgary Stampede Poster of Cowboy, measures 25" x 37"
- Framed Calgary Stampede 100th Anniversary ... includes special copy of 1912 poster and miniature of Guy Weadick 2012 Stampede Poster, measures 27 1/2" x 18"
- Collection of (6) 100th Anniversary Calgary Stampede pins  
(2012) 100 year Centennial Framed Poster, measures 25" x 37"

### **CLOCKS**

- 15 collectible alarm clocks (some as-is)
- Artisan Quartz Clock (faux Grandmother clock), as is (corner damage)
- TY Grandfather Clock, cherry wood?, approx. 6' tall, may need adjustment
- Assorted Wall Clocks including:
  - Reproduction Regulator
  - Frontier Model 31-day (wall hung or countertop)

- o Daniel Dakota key wind (wall hung)
- o Golden Time by Beacon 31-day (wall hung or countertop)
- o Explorer Model 31-day (wall hung or countertop)
- o LODO 31-day (wall hung)
- o Black Forest Cuckoo Clock (wooden) needs adjustment
- o Citizen 31-day (wall hung)
- o Howard Miller (wall hung) Quartz
- o London (Maple Leaf) Quartz
- o Modern (wall hung) Cuckoo Style with American Bald Eagle decals on front
- o \* Several other countertop electrics
- o See John Wayne collectables (2 other clocks)

**We simply cannot guarantee the workings of the clocks**

### **COCA COLA COLLECTION**

- Boxed mechanical bank (makes train move) needs adjustment
- Cooler shaped tin, (4) 8 oz. glasses inside
- Coca Cola can shaped lamp 12"
- Coca Cola stained glass look phone...flashes when rings...ready to plug in
- Reproduction tray 1916 WW girl
- Wall mount mirror with central clock, 12" x 20"
- Plastic shaded lamp (Tiffany style), 15"
- Dancing Coca Cola Can
- 60th Anniversary tray, 1920-1980
- Reproduction 1924 'Touring Car' tray, 17 1/2" x 12 1/2"
- Die-Cast delivery truck with 10 glass bottles, 11" x 6"
- Boxed set of poster car collection
- 1995 sign in wooden base "Always Coca Cola", 16" x 20"
- Fantastic Countertop THERMOELECTRIC Cooler and Warmer (see photo gallery), measures 25 1/2" x 9" x 17" deep, model #DR-3C \*
- Large Coca Cola framed mirror, "THE TYPICAL AMERICAN GIRL", 24" x 18"
- Reproduction tin sign, Coca Cola Santa, 15" x 12"
- Vinyl Carrying bag in shape of Coke Bottle, 24" tall

- Boxed (as new) Coca Cola Barbie (Cheerleader) #28376
- Coca Cola license plate
- 6-pack of full Coca Cola Classic bottles
- Polar Bear and Seal tin
- (2) Callaway Park Coca Cola slurpee bottles
- Large plastic Coca Cola Santa plate, 15 1/2" dia.
- Boxed new Coca Cola Wrist Watch Wall Clock (huge)
- 12 pieces...Coca Cola Dinnerware
- Smaller round-topped 4-bottle electric cooler
- (7) Coca Cola Trim-a-tree ornaments (bottle cap shaped)
- Coca Cola Die-Cast cars (yellow & red) - 1936 Ford, 1950 Chevy, Dodge Truck
- Die-Cast Roadster Convertible
- Die-Cast Delivery Truck
- Die-Cast 20-wheel Semi
- "Refresh Yourself" Double Decker Bus
- Very Cool, heavy duty replica delivery truck with 210 miniature cases of Coca Cola - Awesome piece
- 17 assorted Coca Cola glasses (different patterns)
- Old fashioned delivery truck...Santa driving with Elf Christmas helpers
- Cased Salt & Pepper
- Coca Cola Napkin stand
- Coca Cola Toothpick holder
- Coca Cola Presentation Bottle (award)...employee 300 per capita 1985
- (6) Fridge Magnets

### **FIRE ENGINES AND FIRE RELATED ITEMS**

- Nylint (Tonka) hard plastic Heavy Rescue Unit Firetruck, 22"
- Tonka Hook & Ladder No. 1 (beautiful), 30"
- Tonka Searchlight, 16"
- Remco Hook & Ladder, Engine Co. 49, approx. 16"
- Tonka Rescue Hummer, 12"
- **Unique Firetruck Telephone** (Ahrens-Fox Fire Engine) approx. 12"

- Amazing NYLINT Die-Cast 33" Hook & Ladder, circa 1980 (with fireman)
- Tonka Spotlight Unit 88 Fire Department Truck
- Tonka Die-Cast Hook & Ladder, approx. 16"
- OSHKOSH "Bubble Pack" Die-Cast Code 3 Airport Crash Truck
- Metro City Fire Department Hook & Ladder (Fire Rescue) circa, 1992
- NEWBRIGHT Hook & Ladder, circa 1999, approx. 20" (remote control as is)
- Assorted smaller scale model 3"-4" including: BUDDY L, MatchBox, LLEDO, Models of Yesteryear
- Scale model 7"-9" Die-Cast including: Providence RI Fire Department (Solido), 280 Fire Chief Car, **Ertel 1926 Firetruck/coin bank** Boxed American Fire Engine Classic Scale Model, Die-Cast 1886 American LaFrance Silsby-Manning Steam Fire Engine, 4"

**SELECTION OF FISHING RODS, some unused, some vintage**

- Marado Pilot Glass construction 6' (PC 602)
- Marado Pilot Spinning Combo 6' 6 medium with Stratus II 801
- ABU Conolon 810 graphite composite (x2), as is
- Eagle claw "Black Eagle II" 6 1/2' with graphite
- ALGONQUIN Blankhard model 130, as is
- Muskoka
- Deep Sea rod, SP 285
- Deep Sea unknown (blue rod) (as is)
- Eagle Claw Blank through handle, Star-Fire model spinning rod, SF 203-9' (unused)
- PROweight 6 1/2 ft. Spinning road (unused)  
Heritage Rod #5365

**FISHING REELS, INCLUDING (SOME USED, SOME NOT)**

- SMACK 7700
- D.A.M. Quick 330
- Eagle Claw graphite ballbearing 7535 (unused)
- Daiwai APPOLLO CAST 108
- Daiwai j80X
- KP Morritts Intrepid "Surfcast"
- SHIMANO AX 400S  
Penn Pier #309 Bake-a-lite cased

### **FISHING (Miscellaneous)**

- Metal Mesh Fishing Basket
- Filleting Knife, Danish
- PLANO G300 Fishing Box (as is)
- Approx. 150 assorted "Lures"(sorted into packs of 12)
- Assorted fishing lines, hooks and odds and ends
- 1 Full Length XXXL Raincoat, guaranteed to keep you dry
- 2 unused fisherman's rain ponchos (one size)
- 1 lightweight rain jacket (size M)  
Long handled "scoop net"

### **FURNITURE**

- **Antique Hoosier**, upper glazed cupboard doors, baking surface, cutlery drawer, lower cupboard left side, 3 small central drawers, angled pull-out flour bin right side bottom.
- **Painted Hoosier**, double upper cupboard, 2 lower bins, polished steel baking surface
- Maple (veneer) 3-shelf glass door cabinet, as is, measures 4' H x 32" W x 11" D
- Bookcase, arborite and wood, measures 4' W x 26" H x 12" D
- Circa 1955 6-drawer oakwood **school teacher's type desk** (with key) **only \$56.**  
Stainless steel topped older hospital bedside stand (as is)

### **REPRODUCTION SCALE MODEL GAS PUMPS**

- "WHITE FLASH" PLUS Aviation pump  
AEROGAS Corporation Aviation Gasoline pump

#### **JOHN DEERE**

- JOHN DEERE Tractor Shaped **PLANT STAND**
- JOHN DEERE ERTEL dump truck, plastic cabin... metal box, as new. measures 22" x 13" x 11" deep  
Selection of JOHN DEERE Tractors, Die-Cast (in most cases) from 2" to 12" (**OVER 25 ITEMS!**)

### **ASSORTED TRACTORS AND CATERPILLAR EARTHMOVERS**

- 14" CASE steam tractor
- 2 9" CASE tractors
- Blackhawk, Massey Harris
- 11" Allis/Chalmers

- 2 7" Allis/Chalmers
- Massey Ferguson (Combine)
- 2 International Tractors 8:"(1 with plow)
- 3 (steel wheel) Tractors 7"
- Scale model Caterpillar Die-Cast heavy equipment items (11) including ... Road Grader, bulldozers, earth movers, side boom, excavators, to name a few. Average 6"-8"
- Scale model CAT R245D with rubber tracks all plastic, remote control Excavator approx. 16" H x 22" L x 8" W
- Caterpillar remote control Bulldozer, 19" x 10" x 9" (may need adjustment as is)  
**REMOTE CONTROL ON SOME MAY OR MAY NOT FUNCTION, AND WILL NEED ADJUSTMENT**

### **JOHN WAYNE COLLECTIBLES**

- Special **gold-plated coin engraved "John Wayne...American"** authorized by U.S. Congress with plaque mounted image of John Wayne
- Special group "John Wayne American Hero" Sculptured Collection figures entitled:
  - Taming the West
  - Duke
  - Western Legend
  - Faux "Gun in Holster" titled "Cowboy Spirit"
  - Faux "Gun in Holster" Spirit of the West titled "The Duke"
  - "John Wayne themed train". Each car (6 plus track) has different image of John. Made by HAWTHORNE VILLAGE.
- 2 Special Edition John Wayne wall clocks (original shipping box for 1 clock) with his image on the face of the clock and behind barroom swinging doors (1st version), John behind clock face with stagecoach and horses, and train that moves in and out of tunnel on the hour with whistle blowing (like a cuckoo clock) (2nd version). **These are no longer made and are the ultimate John Wayne collectors' pieces.**

### **"LITTLE TIKES" AND MISCELLANEOUS OTHER TOY MAKERS**

- Large scale plastic dump truck
- (Radio Shack) Racing Monster Truck...F-150 Extreme Machine Remote Control (as is)  
 "KING HUMMER" Scale Model (Huge) measures 25" x 14" x 12"

### **PEDAL CARS including**

- Metal Buick ... black with flames
- Pink Barbie Car
- Fire Department Engine No. 9 with bell, light and 2 ladders

- Grey Mercedes (toys-toys)
- 1938 Model T
- Plastic Batman car (Kings Brewery Toys) in as is condition
- Rocketeer wagon 1930s style by Glide-Ride
- Small Radio Flyer No.8 4-wheel toddler ride-em vehicle

### **PHOTOGRAPHS**

- Framed photographs of MAC trucks in color (12)
- Framed photographs of "Wartime Planes" (12)
- Numerous other pictures of cars and trucks

### **RADIOS & SUCH**

- Reproduction Thomas table top electric radio
- Coca Cola Radio in shape of cooler
- Viking Antique Cabinet Model Radio (T.Eaton Co.) needs cleaning but it works.
- Majestic Radio (poor condition, sold for parts only)
- Reproduction Grafonola horn (with bass treble balance and loudness settings) plays LPs (33 1/3, 45s, 78s) in the style of the old model gramophone, made by The Grafonola by Guild. Some adjustment may be required. (as is condition)
- Reproduction Cathedral Top 1934 Table Top Radio by Thomas
- Front end of 57 chevy radio (red) with framed pic of 57 chevy), sold as a set

### **SPOON COLLECTOR'S ALERT**

Over 600 spoons, some on racks priced very low...to sell. (average 50 cents per spoon)

### **STEMWARE & CHINA**

- "Exquisite" pattern crystal circa 1975, wedding gift, includes liqueurs (6), port (8), white wine (6), red wine (6), brandy (4) inset black stems plus sorbet, martini...8 each
- JP & Sons Dessert Set, lunch plates (8), Cups & Saucers to match (missing 1 cup), plus 2 cake plates Pattern #1896
- Toshach 1932 calendar plate
- Toshach bowl...badly cracked display only!

### **TELEPHONES** including

- DECO-TEL Candlestick style, black
- Square box... with brass cradle receiver

- CONAIR white cradle phone
- Northern Telecom square box
- Small hand phone...shape of car
- Antique Northern Bell Candlestick phone
- (2) Harley Davidson Motorcycle telephones

#### **TONKA ROAD CONSTRUCTION TOYS (condition noted)**

- Mighty-DUMP Truck (not bad)
- Rubber treaded Drag Line (poor)
- Mighty-DUMP Crane (poor)
- Mighty-Loader (not bad)
- Tonka Turbo-Diesel (not bad)
- Huge Mighty Scraper, 27" (not bad)
- Mighty Tonka T-9 Dozer (poor)
- Tonka Grader (good)
- Mighty Tonka Diesel (not bad)
- Tonka Grader (very poor)
- Tonka Turbo Diesel Cement Mixer (not bad)
- Tonka Mighty Motorized Scoop and Truck (3207) (not bad)
- Green Tonka Tractor, metal and plastic (as is)
- Yellow Tonka Road Grader, 17 1/2" long (as is)
- Red Tonka Tractor with Grain Trailer (as is), 21" long
- Green Tonka Front End Loader (as is)
- Small Tonka Dump Truck (x3), 9"
- 3 Tonka Mighty Diesel Dump Trucks, mostly die-cast metal with metal boxes, 16" x 9" x 7"
- Tonka Turbo Diesel Dump Truck, plastic with metal box, 16" x 9" x 7"

#### **TRAINS AND TRAIN RELATED ITEMS (SOME DESCRIPTIONS MAY NOT BE TOTALLY ACCURATE, SORRY)**

- Vintage Electric Train (tin) 1" scale, Engine 3000 with coal car and refrigerator car, passenger car and caboose, total measurement 32" with track
- Larger scale "New Bright" 1 3/4" gauge (plastic)...Pioneer Engine 999, Pioneer coal car, overland freight car, Western Frontier passenger car, and Western Express caboose, on track, overall measurement 5', 4 3/4" H

- 1986 "New Bright" Remote Control Engine with coal car "Royal Blue" \* Remote control may need adjusting
- 1988 Toy State plastic engine, coal car, freight car and caboose
- "The American Classic Express" measures approx. 43" x 4 1/2" H
- **Unique Lionel Collectible Train Wrist Watch**, Limited Edition with original box (train moves around face of watch) and Lionel Train Pocket watch
- Calgary Flames Express Train Collection, made by Bachmann NHL authorized ... Hawthorne Village Collection, ...on cars...Great Save, Calgary Flames, Stanley Cup Champions, Wrist Shot, Calgary on Engine and one other car, "O" gauge, wheels 3/4" apart, plus track
- SANTA FE Train 1095, Engine and one car, 1 1/8" between wheels, measures 24"
- Tyco 4 Car Train on track, 5/8" between wheels, engine, 2 coal cars and oil tanker, measures approx. 20"
- Chattanooga 5628 Engine with CN passenger car, made by Tyco, 3/4" between wheels, measures approx. 18 1/2"
- SANTA FE Railroad Santa Claus Train, "Calgary Holiday Special", forward and reverse action (may need adjustment), engine with faux coal car, measures 25" x approx. 7 1/2"
- Steam Age Collection, King Maker mfr, Engine and coal car **made of sculpted Welsh coal, in Wales**. Coal Engine and coal car on coal plinth, measures 12" x 3 1/4", entitled "The Battle of Britain"
- British Coal sculpture of 62739 "The Badsworth", replica car **made of coal by E&J Mining Memories Limited**
- Jim Beam Kentucky Bourbon, Liquor Bottle in shape of Train Engine. Side reads 1872 Grant, bottle measures 14" x 7", and includes a second bottle in the shape of a coal car, side reads C.R.R. 197 of N.J., 1979, Caboose with interior Jim Beam bottle, logo on side reads New Jersey 91117. Total measures 36" (coal car bottle empty, others full)
- Pioneer hard plastic (ride 'em train engine) with steering on wheels
- Lionel Railroad Crossing Bank with instructions, measures 50" H (over 4 feet)  
Extra train related items include some 2 1/2" track, some 3/4" track

### **OTHER (MODEL) VEHICLES**

- Model of 2-car "Classic Vehicle Hauler". **Advertising Heninger and Sisson 2009 Fall Auction**, labelled Car Crazy, **VERY LIKELY ONE OF A KIND** - measures 4 feet x 11" tall x 6 1/2" D
- Custom made **Stainless Steel "stylized" Cattle Liner** (extremely unique). Almost qualifies as Metal Art, measures 60" x 13" H x 4" ERTEL Model of **Peterbilt Cement Mixer** from Big Farm Series, measures 25" x 9 1/2" H x 6" D

### **FLOOR MODEL & HAND TOOLS (...yes some items are older but made of good quality ... lots of wear left!)**

- Drill press, Daytona Model 16 speed
- 10" Band Saw, Delta with appropriate base
- Older style Table Saw on hand-made stand
- Wheeled 4-step ladder with cage and brake (about 60" tall)

- **Snap-On 2-tiered tool box, 12 drawers ... FULL OF TOOLS!!**
- Set of Blue-Point Supreme Wrenches (12)
- Older Black & Decker 3/8" Electric Drill
- SKIL Reversing Drill in box
- Older 1/2 " Reversible Drill
- Older Strongarm Electric Winch
- Set of Challenger Wrenches 3/8" to 1 1/4"
- Truck Hitch Receiver - 10,000 lb wt
- 3/4 horse...8" bench grinder on base
- Equalizer Hitch
- Older 7" angled grinder (4074)
- Older 7-9" sander/grinder SKIL
- Older Makita Grinder
- Fyr-Fyter Fire Fighter brass coloured Dry Chemical Fire Extinguisher
- Pyrene All Purpose Fire Extinguisher (new in box)
- (2) 80 lb. portable air tank (red & orange)
- Coleman Halogen Spotlight
- Gilmour Spray-Doc hand-pump garden sprayer - 2 Gallon
- Flo-Master Wood & Masonry Sprayer - 2.5 Gallon
- 24 Full cans of oil (metal)  
3 older bicycle air pumps

### **TOYS**

- Huge Scale Model **Radio Controlled** (Best Engineering) **Front End Loader**, measures 3' x 13" tall x 13" D
- Selection of **Hot Wheels** (25 pieces)
- CAMPBELL'S Kid (Soup) doll
- Betsy-Wetsy doll  
Jaguar Convertible Barbie Car measures 25" x 10" W 8" H (plastic)

### **WATERPUMPS**

(2) waterpumps, cast iron, over 100 years old

### **WESTERN RELATED ITEMS**

- Plaster cast model...artist Richard Muno, "cowboy watering horse with hat", 1971, "National Cowboy Hall of Fame"
  - Chuckwagon replica (lamp)
  - Cast Iron welded Welcome Sign - Cowboy roping
  - Selection of Western LP's including Wilf Carter, Hank Snow, Johnny Cash, Gene Autry, Sons of the Pioneers, Roy Rogers and Dale Evans
- PASTEL picture of Roy and Trigger ... artist signed**

### **MISCELLANEOUS**

- 2 Kerosene Oil Lamps
- 3 Old style electric coffee perks (2 with cords, 1 not), approx. 14 1/2" tall
- **C.P.R. Train lantern** (needs clean up as found)
- Set of Earthenware dishes by George Jones & Sons, pattern #32569, Impressed date on base, November 1940. (54 pieces) Neutral beige colour with floral trim. (Missing 1 cup)
- Very interesting **"The Lord of The Rings" Calendar**, wall-mounted plaque with 12 plates (1 for each month of the year)
- Maple Wood Cigarette Box. Bottom drawer opens, 30 cigarettes in canti-levered holder pops up
- Mother of Pearl handled pie lifter, Mother of Pearl handled large spoon, Mother of Pearl handled butter knife, silver plated salad tongs, silver plated pastry lifter, silver plated sugar tongs
- One of a kind cradle made by Grandpa Arthur
- Set of six Vintage General Tire & Rubber Company place mats featuring older cars
- Selection of older "Sad Irons"
- Selection of 1-2-3 TAYLOR-FORBES Sad iron with handle
- **4 Cast iron coal irons** from Hungary (late 1880's-1900's)
- (1) Asbestos Sad Iron with lift-off handle...re-plated
- Miniature liquor bottles, some full, some not, approx. 12
- Approx. 24 different types of "full" beers...some in bottles, some in cans
- Print by John Byrne dated 1960, \* John Byrne graduated from Alberta College of Art & more recently was **one of the artists for Superman comics**
- 1970s Reproduction Pepsi Cola Metal Tray (only one ever made)
- Selection of set of "General Tire" beer trays (4)
- Early **1900s Peg style, sloped table top "hockey game"**
- 4 Rubber Tire Ashtrays - Time Tire & General Tire
- PACHINKO tabletop game (may require work)

- Floor model “Movie Time Popcorn Maker”, double spoked wheel base, **unused**, 53” tall popcorn container 12” square. Painted red with brass trim.
- Old Fashioned Popcorn Movie Time Electric Hot Air Popcorn Maker (table top)
- 1 BOLS liquor Ballerina Gold Liquor Musical bottle
- 1 BOLS liquor bottle...couple dancing inside
- (2) Carpets made by MILLIKEN in Montfleur design in blue, grey colors, **BOTH MEASURE 5’4” X 7’8”**. One rectangular, one oval
- Selection of Jim Beam liquor bottles in shape of CORVETTES (6 empty, 1 full)
- New in box Ashton Drake doll, Meagan Rose, 1994
- Set of (8) limited edition plates entitled “SOUL MATES”. Shows Native American couple in loving embraces...complete with wall rack
- “Carol Lawson” collectors plates, 8 in the series, 1981-1989. Plates with dog themes (mostly labradors)
- Thomas Kinkade figurines (3)
  - Emerald Isle Santa
  - Woodland Christmas Santa
  - Frosty Christmas Eve Santa
  - AVON Nutcracker and Mother’s Day plates, 4 in each set
  - Lina Lui’s “Enchanted Garden” series combination lamps and music boxes (3 different)
  - Lina Lui’s “Wings of Enchantment” series, Flower Fairies:
    - Satin Sapphire
    - Dazzling Indigo
    - 400-500 LP records from every genre – Western, male vocal, female vocal, bands, you name it!  
100s of 45s

**MISCELLANEOUS COLLECTOR "DIE-CAST" VEHICLES**

- 1959 Ford F 250 Pick Up, 11” x 4” x 5” on plinth
- 1940 Ford Sedan Delivery (beautiful)
- 1953 Chevy 3100 Pick Up
- Bedford Yellowways Tour Bus, 27 passenger, 11” x 4” x 5”
- Routemaster Greenline Double Decker Bus, 15” x 4” x 7”
- London Transport RT113 Double Decker Bus, National War Bonds for Victory, 13” x 4” x 7”
- Bedford King Alfred Tour Bus, 27 passenger, 12” x 4” x 5”
- International Van Body Truck, Dean Van Lines, 10” x 3” x 5”
- GMC C.O.E. Van Body Truck, Burkhart’s Beer and Mug Ale Delivery, 7” x 3” x 4”

- White Motor Company Superpowered Truck with flatbed and racks, 8" x 3" x 3"
- Dodge Power Wagon, 4X4 Pick Up Truck, 8" x 3" x 2"
- Semi Truck and Van Trailer, Greyhound Van Lines Moving Truck, 11" x 2" x 3"
- Scammel Semi Truck and low boy trailer, Wreckin Roadways, 10" x 2" x 2"
- 1939 Peterbilt Semi Truck, tractor only, 5" x 2" x 2"
- 1951 Ford Flatbed truck with racks, load of Dekalb Genetics Seed Bags, 8" x 3" x 2"
- 1951 Ford Flatbed truck with racks and cargo, Bekins Vanliners, 8" x 3" x 2"
- International Flatbed truck with racks and cargo, 8" x 3" x 2"
- 1958 GMC 300 with stock racks and tarp, 7" x 3" x 2"
- 1951 Ford Fuel tanker truck, Richfield Oil Corp., 7" x 3" x 2"
- 1950's Flatbed delivery truck with oil barrel cargo, Texas Pipeline Company, 6" x 2" x 2"
- Mack Vanbody truck, Wilton Farm Dairy, 6" x 2" x 2"
- Peterbilt Model 379 unit with lowboy trailer and challenger back-hoe, 22 1/2"
- Harley Davidson "Buddy L" Kenworth tractor with van trailer, 21"
- Kenworth tractor with van trailer, 22"
- Kenworth W900L "I Love New York" with Statue of Liberty image on trailer, 22"
- Kenworth Pennzoil Panter Racing Trailer #4, 22"
- Kenworth tractor, low boy trailer with Kenworth C-Can, 23"
- Kenworth gravel truck and pup trailer, 22"
- Kenworth tractor with matching van trailer, 22"
- Kenworth tractor with cattle liner, 20"
- Peterbilt tractor with matching van trailer, 22"
- Peterbilt tractor with cattle liner, 20"
- Peterbilt tractor with matching van trailer "Hot Rigz", 22"
- Peterbilt Shell Tanker with pup tanker trailer, 20"
- Peterbilt New Ray car hauler, 13"
- Peterbilt American Towing Big Rig tow truck, 11"
- Winross truck double van trailers, RPS logo, 13"
- Western Star Limited Edition racing champions #539, tractor with matching van trailer, 14"
- Winross Sterling Trucks tractor with matching van trailer, 12"
- First Gear Mack Aero Mayflower Transit Co. tractor and matching van trailer, 14"

- First Gear Mack tractor and matching van trailer, 14"
- Tonkin Consolidated Freightways tractor and double van trailer, 16"
- Eaton Axles tractor and trailer, 14"
- Kenworth Caterpillar Racing trailer, 14"
- Harley Davidson stock rack truck, 5"
- First Gear Mack tractor with low boy trailer and pick-up truck, 16"
- Cool Rock-Ola Jukebox delivery truck, 8"
- Co-op tractor with matching trailer, 10 1/2"
- Matchbox Jim Beam tractor with matching trailer, 12"

**This is only a small example of the many 100s of vehicles available ... cars, trucks, semis, all in as new condition as they have been under glass in showcases.**

### **CORGI DIE CAST VEHICLES**

Approximately 24 in various sizes, various vehicles - \$12 and up

**COIN BANKS**, including 10" yellow bus, Ertel Fergus truck show 8 1/2", Greyhound Bus 9 3/4", Ertel Chevy Truck 7", Ertel True Value Hardware Store 7", Ertel Replica Ford 6", Ertel Replica Mack 6 1/2", Ertel Replica 1923 Delivery Van 6 1/2", Ertel Replica 1913 Model T 6", Ertel 1918 Model T 5 1/2", Ertel Chevy 1923 Delivery Van 7", Ertel 1918 Model T 5 1/2", Ertel 1917 Model T 6", Ertel 1918 Model T Runabout, Liberty Classics Limited Edition 1918 Studebaker Key Wind to open bank 6", Liberty Classic 1938 Chevy Key Wind to open bank, Liberty Classic 1940 Ford truck 7" key wind to open, Liberty Classic 1925 Ford, 1937 Chevy Liberty Classic Key Wind to open bank, 1936 Dodge 7 1/2", 1937 Chevy Key Wind to open bank 6 1/2", Ertel Eastwood Co. bank 6 1/2", Ertel Home Hardware, Liberty Classic Model A, Ertel 1939 Dodge Airflow, Ertel 1930 2 1/2 ton (blue), 1930 2 1/2 ton (red), 193 2 1/2 ton Texaco, Liberty Classic 1940 Ford, Liberty Classic 1940 Ford Convertible

### **KIDS ELECTRIC MOTORCYCLES (3-8 YEARS OLD)**

- All American Classic Crusier, battery operated ... top of handle bars approx. 30", 15" deep, 54" front to back. Flame tank, saddle bags, headlights. Instruction booklet and plug-in. (Also includes training wheels)
- All American Classic American Chopper, Model 0341, battery operated ... top of handle bars approx. 36", 15" deep, 63" long. Flame tank and rear fender, with saddle bags, headlights. (instructions and training wheels)

### **ELECTRIC BATTERY OPERATED CHILD'S REPLICA 1932 CONVERTIBLE CAR**

Made of wood and some plastic accessories. Wooden luggage box on back. Measures 52" long, 21" W, 20" High

### **"DIE-CAST" MODEL AIRPLANES (THESE ARE AMAZING)**

- Approximately 40 from 2 3/4" wing span to 24", including:

- o P51 Mustang (9")
- o Spitfire MK1, Ltd. Edi. on stand
- o P47 Thunderbolt on stand (10")
- o Dauntless Camouflage (10")
- o Corsair F40 (10")
- o P40 Camouflage (9")
- o JU52 Camouflage Iron cross (24") x 2
- o Heinkel 111 Desert Camouflage (beige blue) (19")
- o CORGI DIE-CAST include Corsair + 0 (pair with landscape stand (6"))
- o CORGI Lancaster bomber Camouflage on stand Ltd.Edi. 1443 of 2300 worldwide (17")
- o CORGI BF109 Camouflage on stand Ltd. Edi. (12")
- o CORGI Spitfire Camouflage on stand (14")
- o CORGI Mosquito Camouflage includes 2 figures and trailer, Ltd. Edi. (21")
- o CORGI B17 US Army Camouflage, Ltd. Edi. 1832 of 2600 (18")
- o CORGI Lancaster RCAF Rescue, on stand (18")
- **These are very heavy models, most on display stands**  
**GIANT SIZE** \* Hangar 9 B-25 Mitchell ARF "Mitch the Witch II", **measures 80" tip to tip, 64" nose to tail**

### **RACING CARS**

Selection of "Racing Champions" Mini Cars, circa 1991-1996, 3" , 29 assorted vehicles

\* Plus 2 additional cars autographed, Bobby Hamilton and Wolf

\*\* special edition McDonalds #94

### **IMPORTANT TO NOTE: SELECTION OF 24 DISPLAY SHOWCASES with back entry unless noted**

- No. 1 - Chromed edging, grey interior with 2 interior shelves with room for more, glass shelves, measures 21" D x 72" W x 40" H
- No. 2 - Corner cabinet (smaller), 1 interior shelf, front opening, measures 24" D x 51" (3 angles) x 42" H
- No. 3 - measures 22" D x 60" W x 40" H
- No. 4 - measures 180" D x 60" W x 39" H
- No, 5 - measures 21" D x 60" W x 39" H
- No, 6 - measures 21" D x 47" W x 40" H
- No. 7 - measures 20" D x 72" W x 41" H
- No, 8 - measures 20" D x 60" W x 46" H

- No. 9 - measures 20" D x 60" W x 46" H
- No. 10 - measures 21" D x 48" W x 38" H

**Note: There are another 16 showcases, various sizes, some with storage behind, some with working lights. Now is your chance, they don't come up often!**

**There are literally hundreds of models...cars, trucks, trains, air planes, motorcycles and much more in "Vic's Museum." We couldn't possibly list or photograph them all. You will be amazed. He never sold a thing before this sale!**

**There is much, much, much more to see than what we have listed here. You have to see it to believe it  
See you at the sale and don't forget to bring your friends.**